



SENS - TECH

Xdas HE

RAPID CARGO INSPECTION

NEW INNOVATIONS IN HIGH ENERGY X-RAY DETECTION

TRUSTED BY GLOBAL MARKET LEADERS

For decades, Sens-Tech has been the trusted partner to the **world's** leading cargo-scanner OEMs with robust, high-performance X-ray detectors built for the toughest environments.

Now, we're raising the bar—delivering sharper detection and faster throughput with **next-generation** 2D photodiode arrays and an **ultra-fast** Analogue Front End.



**HIGH ENERGY.
HIGH SPEED.
HIGH RESOLUTION.**

Xdas HE

FROM  SENS - TECH

KEY FEATURES



CLASS-LEADING INTEGRATION TIME



Sens-Tech's proprietary ASIC achieves integration time down to **20 μ s**. Delivering the highest quality image generation without compromising throughput.

HIGHEST RESOLUTION



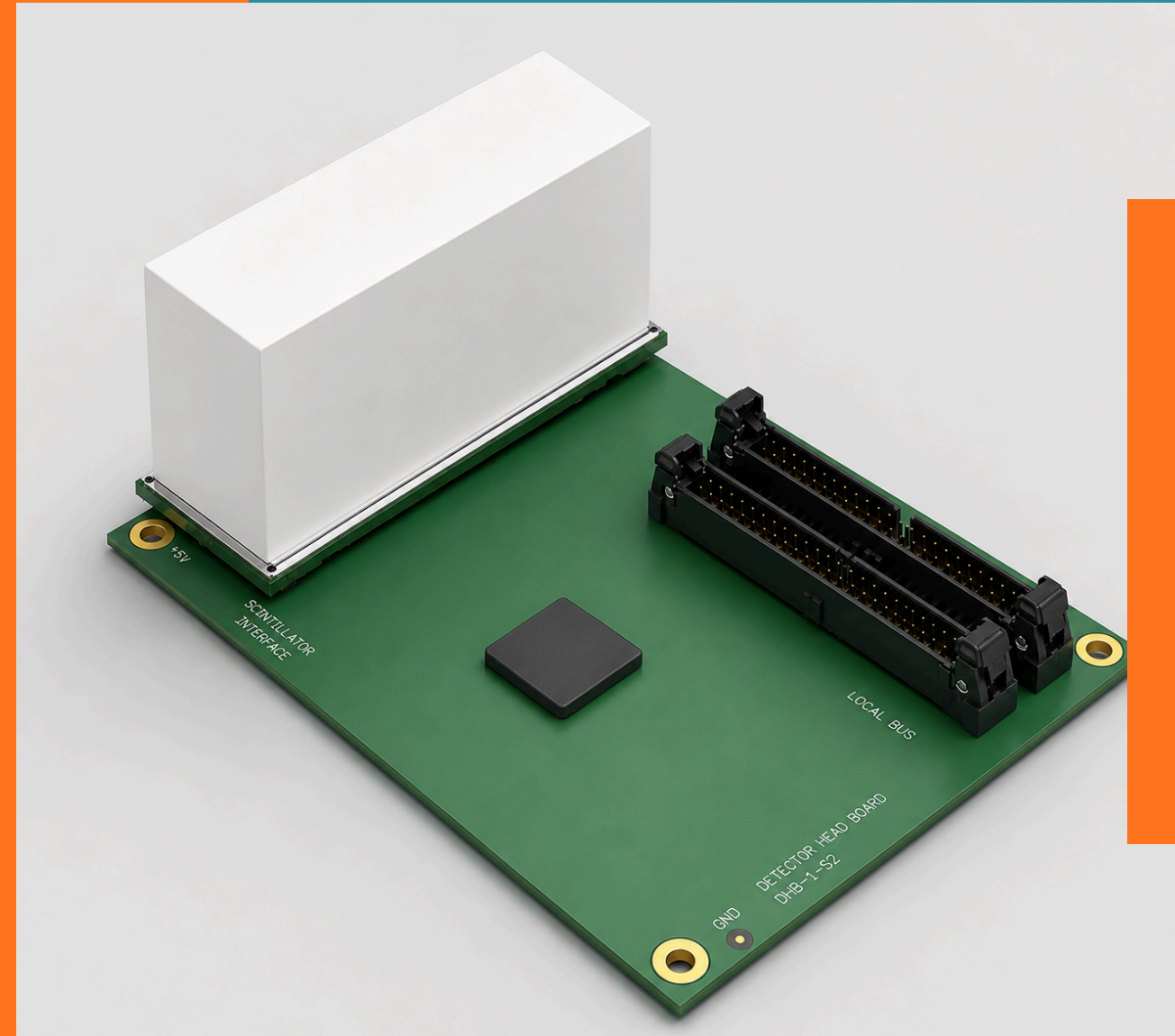
The latest 2D photodiode array captures more detail than ever before. Detecting metal wires down to **1mm width**.

TIME DELAY INTEGRATION



4 or 8 rows of photodiodes are integrated slice by slice, significantly improving Signal:noise ratio.

CONFIGURATIONS



2D Photodiode Array	Single Row	4-Rows	8-Rows
Photodiode Pitch	2.5mm		
No. of Channels	32	128	256
X-Ray Energy Level	Up to 10MeV		
Scintillator Material	CsI / CdWO4		
Min Integration Time	20μs		
Data Rate	10Gb/s		
Max Throughput	Up to 200 vehicles per hour		
Wire Detection (Spatial Resolution)	Down to 1mm		
Array Length	Up to 10m		



SENS - TECH

www.sens-tech.com